



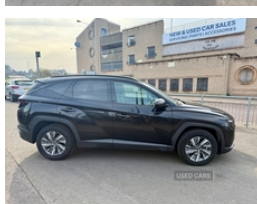
40 Bingham Street, Bangor, BT20 5DN
Mellons Hyundai: 028 9127 0444 | Derek: 078 6482 6766

Hyundai Tucson 1.6 TGD Hybrid 230 SE Connect 5dr 2WD Auto | Mar 2021

**FULL SERVICE HISTORY & REMAINDER OF MANUFACTURES
WARRANTY**

Hyundai Promise
Approved Used Cars

5 Year Warranty



MELLONS | HYUNDAI

Contact Derek 07864826766

**Fantastic value Petrol Hybrid Vehicle drives and Looks
like new, apple car play/android auto, blue tooth, sat nav,
rear parking sensors, reversing camera, etc.
Remainder of Manufactures Warranty.**

3 Year Extended Warranty Available on this Vehicle

Vehicle Features

2 front and 2 rear speakers with 2 tweeters, 3x3 point rear seatbelts, 10.25" super vision instrument cluster, 10.25" touchscreen satellite navigation with mapcare and live services, 12V power outlets in front console and luggage compartment, 17" alloy wheels, 40/20/40 split folding rear seat, Active bonnet, Adjustable head restraints (Up and down), Adjustable intermittent front windscreen wipers with aero wiper blade, Alarm, Anti-lock brake system, Apple car play/Android Auto, Auto dimming rear view mirror, Automatic defog system, Automatic headlights with dusk sensor, Automatic windscreen wipers with rain sensor, Autonomous emergency braking, Bluetooth system, Body colour bumpers, Body colour door mirrors with integrated indicators, Body colour exterior door handles, Brake assist function, Childproof rear door locks, Cloth upholstery, Cruise control, Cupholders in centre and rear console, Cupholders in rear armrest, DAB Digital radio, Deadlocks, Digital clock, Door courtesy lights, Downhill brake control, Drive mode selector, Driver's seat electric lumbar support, Driver's seat manual height adjust, Driver and passenger airbags, Driver and passenger sunvisors with illuminated LED vanity mirrors, Driver attention warning, Dual zone climate control, E-call, Electrically adjustable, Electric front windows with anti-trap mechanism and one touch control, Electric parking brake with auto hold function, Electric rear windows, Electronic stability control, Emergency

£22,395

Miles:	20500
Fuel Type:	Hybrid Electric
Transmission:	Semi-Automatic
Colour:	Black
Engine Size:	1598
Body Style:	Sport utility vehicle
Insurance group:	18E
Reg:	TGZ6249

Technical Specs

DIMENSIONS	
Length:	4500mm
Width:	1865mm
Height:	1651mm
Seats:	5
Luggage Capacity (Seats Up):	616L
Gross Weight:	2175KG
Max. Loading Weight:	611KG

PERFORMANCE & ECONOMY	
Fuel Consum. (Combined):	50.4MPG
Fuel Tank Capacity:	52L
Number Of Gears:	6 SPEED
Top Speed:	120MPH
Acceleration 0-100 km/h:	8s
Engine Power BHP:	226.6BHP

stop signalling system, Follow me home headlights, Forward Collision Avoidance Assist (FCA) - Car, Front and rear door pockets, Front and rear seatbelt reminder, Front armrest with storage box, Front center airbag, Front door pocket bottle holders, Front fog lights, Front passenger airbag deactivation switch, Front passenger seat lumbar adjustment, Front seatbelt pretensioners, Front side airbags + full size curtain airbags, Halogen projector headlights, heated and power folding door mirrors, Height/reach adjustable steering column, High beam assist, Hill start assist control (HAC), Illuminated/air conditioned glove compartment, Immobiliser, Intelligent speed limit assist, ISOFIX child seat anchorage points attached on outer rear seats, Lane follow assist, Lane keep assist, LED daytime running lights, LED rear lights, Locking wheel nuts, Luggage area underfloor compartment, Luggage compartment lighting, Luggage cover, Luggage hooks, Manual height adjustable front passenger seat, Manual speed limit assist (MLSA), Map reading lights, Multi-Collision braking, PAS, Pedestrian and Cycle, Positioning Lights - LED, Privacy glass - Rear windows and tailgate, Rear parking sensors, Rear wash/wipe with intermittent wipe setting, Remote control central locking, Retractable load cover, Rev counter, Reversing camera, Roll over sensor, Roof rails, Seatbelt height adjustment for front seats, Speed sensitive auto door locking, Steering wheel mounted audio/phone controls, Sunglasses holder, Tailgate open warning light, Tinted glass with windscreen shade band, Traction control, Trailer stability assist, Trip computer, Trip odometer, Tyre pressure monitoring system with individual tyre pressure display - TPMS, Tyre repair kit, USB connections in front and rear, Vehicle stability management, Voice recognition, Water temperature gauge, Windscreen washer fluid sensor and warning indicator